



Eurobodalla

April 2024

EUROBOD ALLA

Eurobodalla LGA



Located on the far South Coast of New South Wales, Eurobodalla is easily accessible from Sydney, approximately a four-hour drive via the picturesque Sydney to Melbourne coastal route. Canberra is also within easy reach, with a travel time of around two hours by car.

Stretching from South Durras to Tilba Tilba in the south, the Eurobodalla region offers a stunning blend of coastal vistas, rivers, forests, and agricultural lands. Explore charming seaside towns such as Batemans Bay, Broulee, Narooma, Moruya, and Central Tilba, each adorned with the refreshing embrace of the ocean.



EUROBODALLA SNAPSHOT



POPULATION
40,755
0.5% of NSW

TOP 4
GRP BY INDUSTRY



GRP
\$2,691m
0.3% of NSW

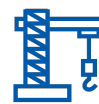
OWNERSHIP OF DWELLINGS

\$340.7m



NUMBER OF
LOCAL BUSINESSES
3,263
0.4% of NSW

CONSTRUCTION



\$294.2m

HEALTH CARE & SOCIAL ASSISTANCE



\$254.8m



AVERAGE AGE
48.5 Yrs
39.4 in NSW

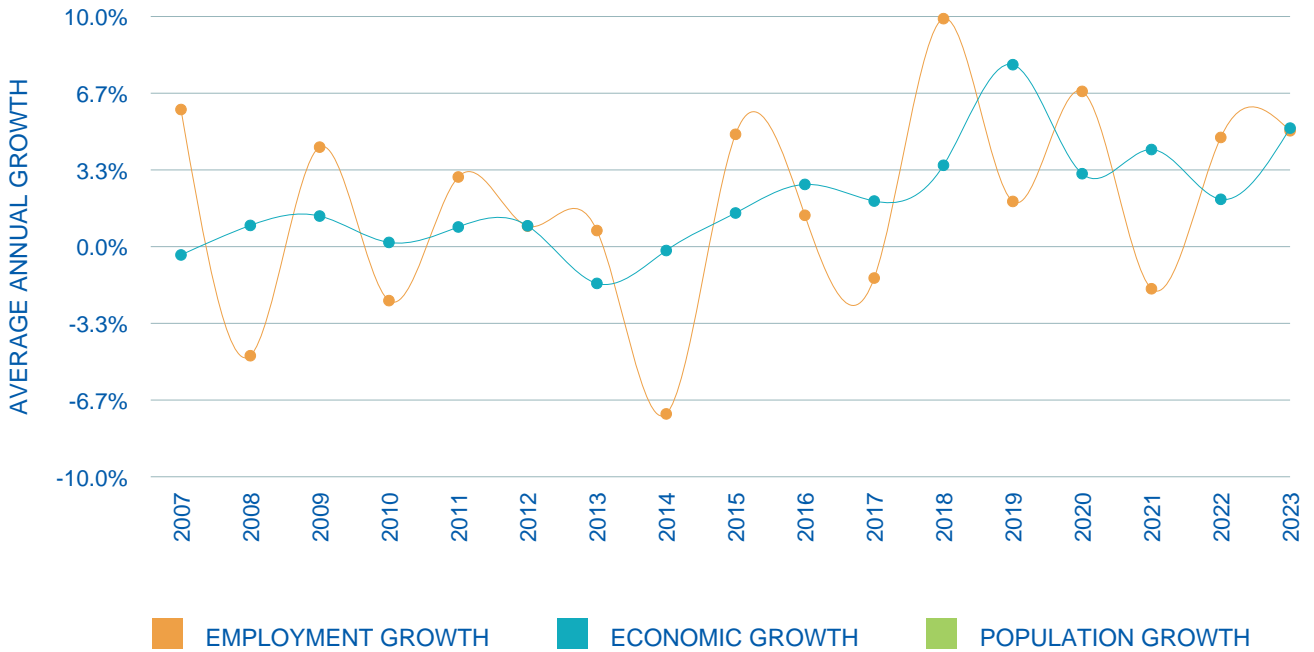
RETAIL TRADE



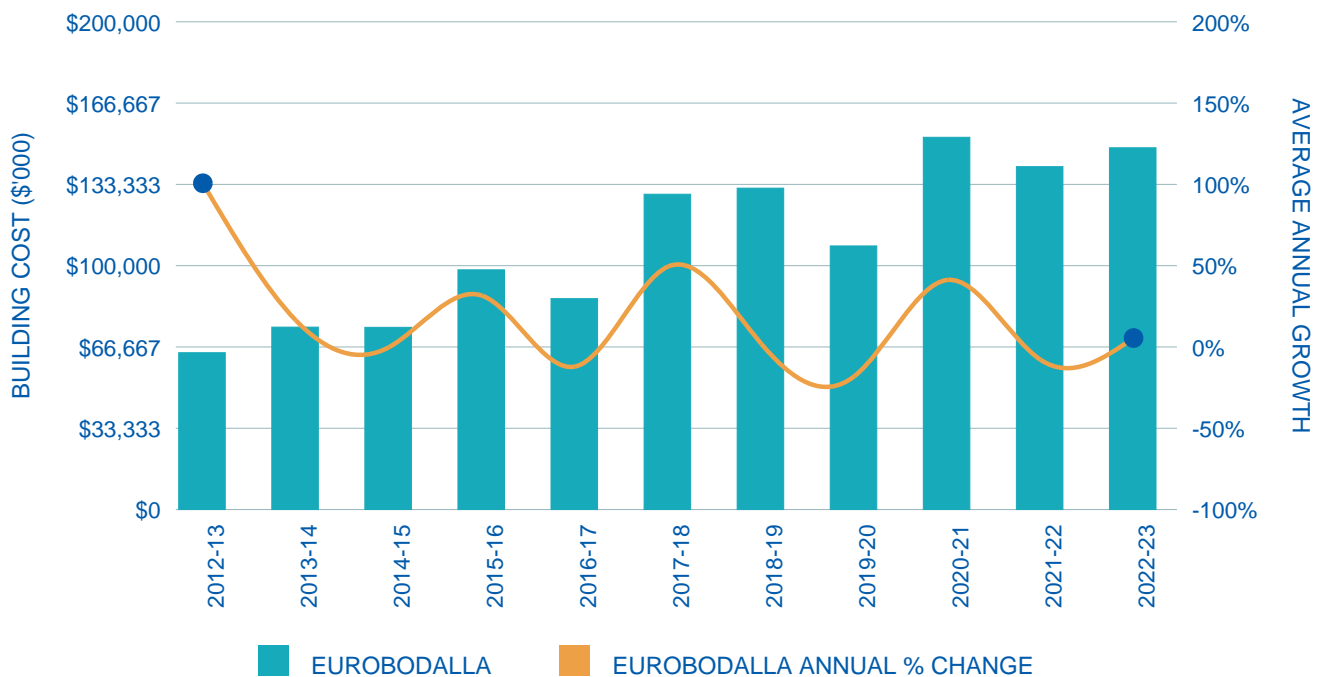
\$216.7m



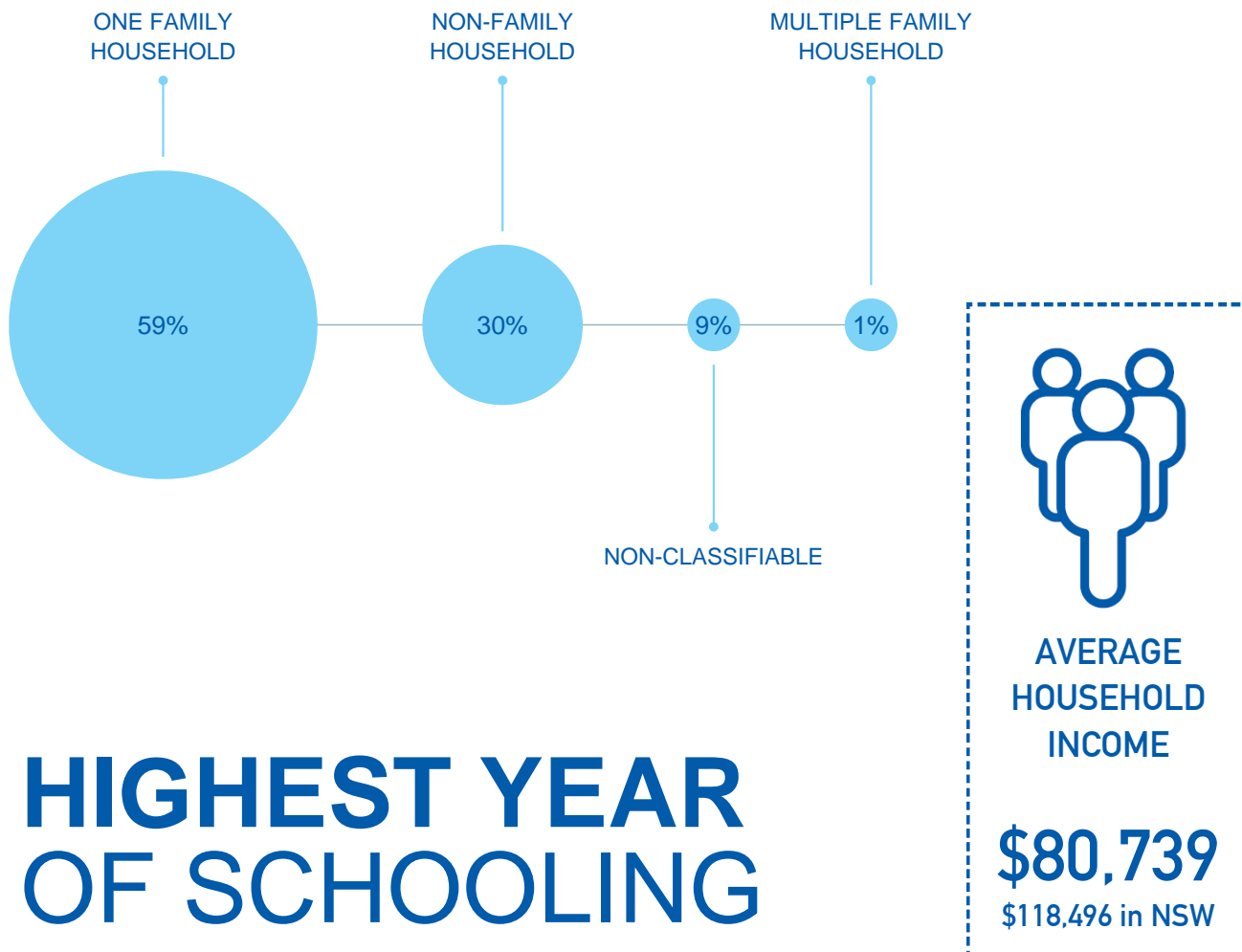
GROWTH DATA SUMMARY



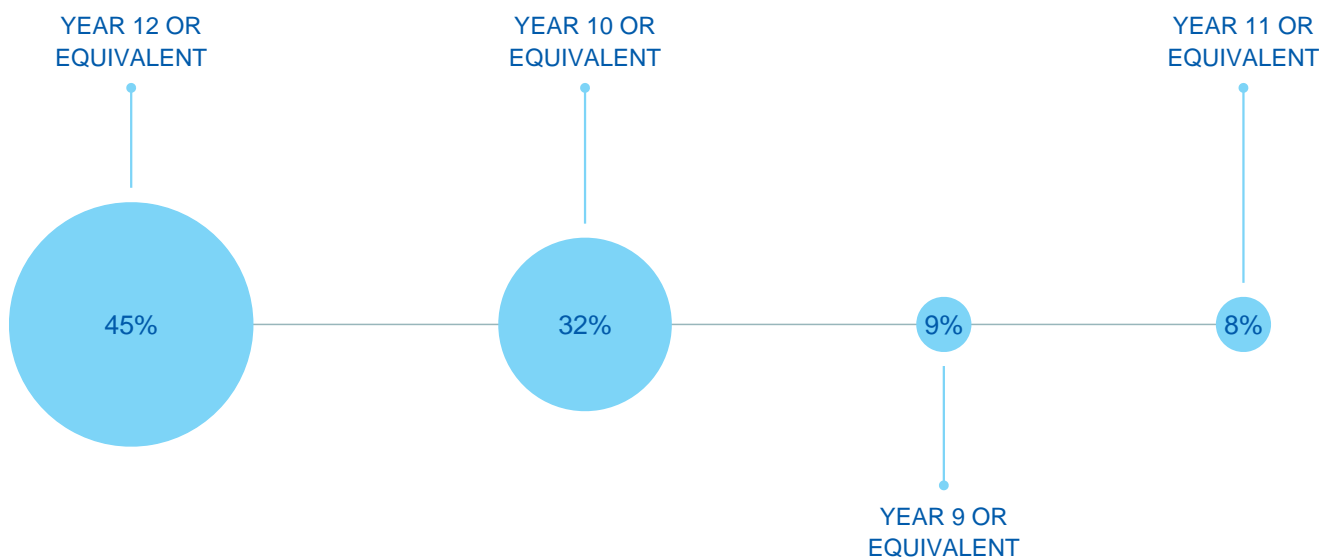
RESIDENTIAL BUILDING APPROVALS



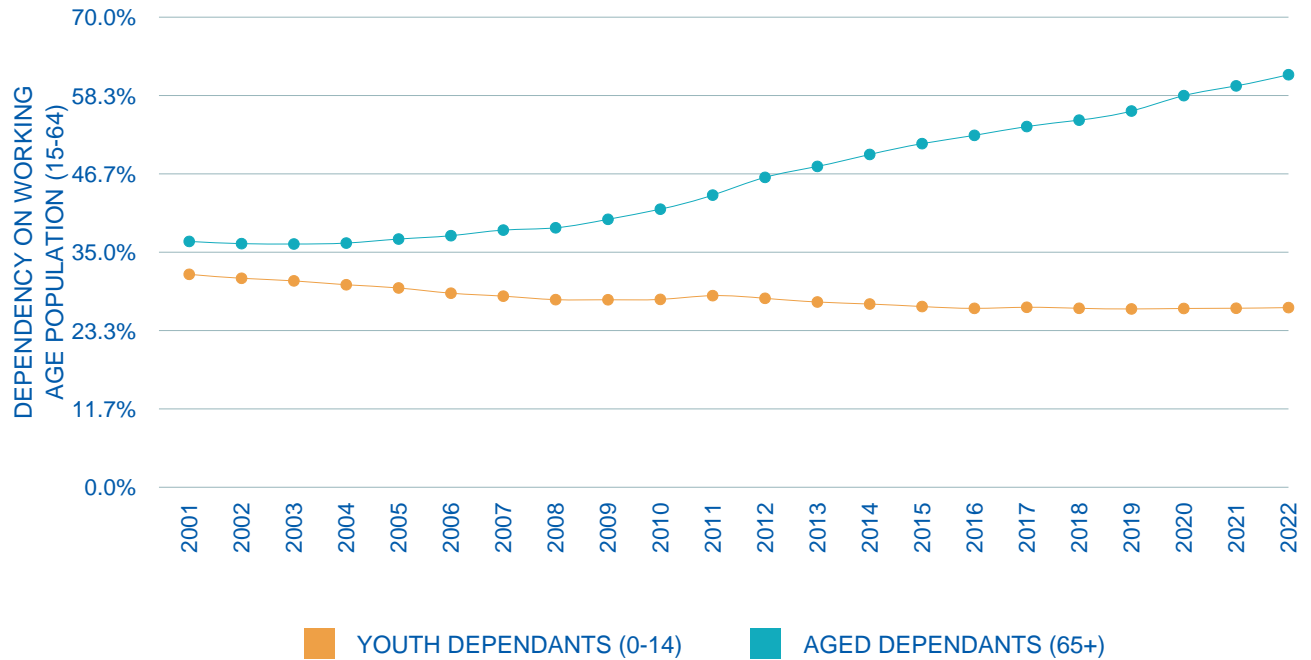
HOUSEHOLD COMPOSITION



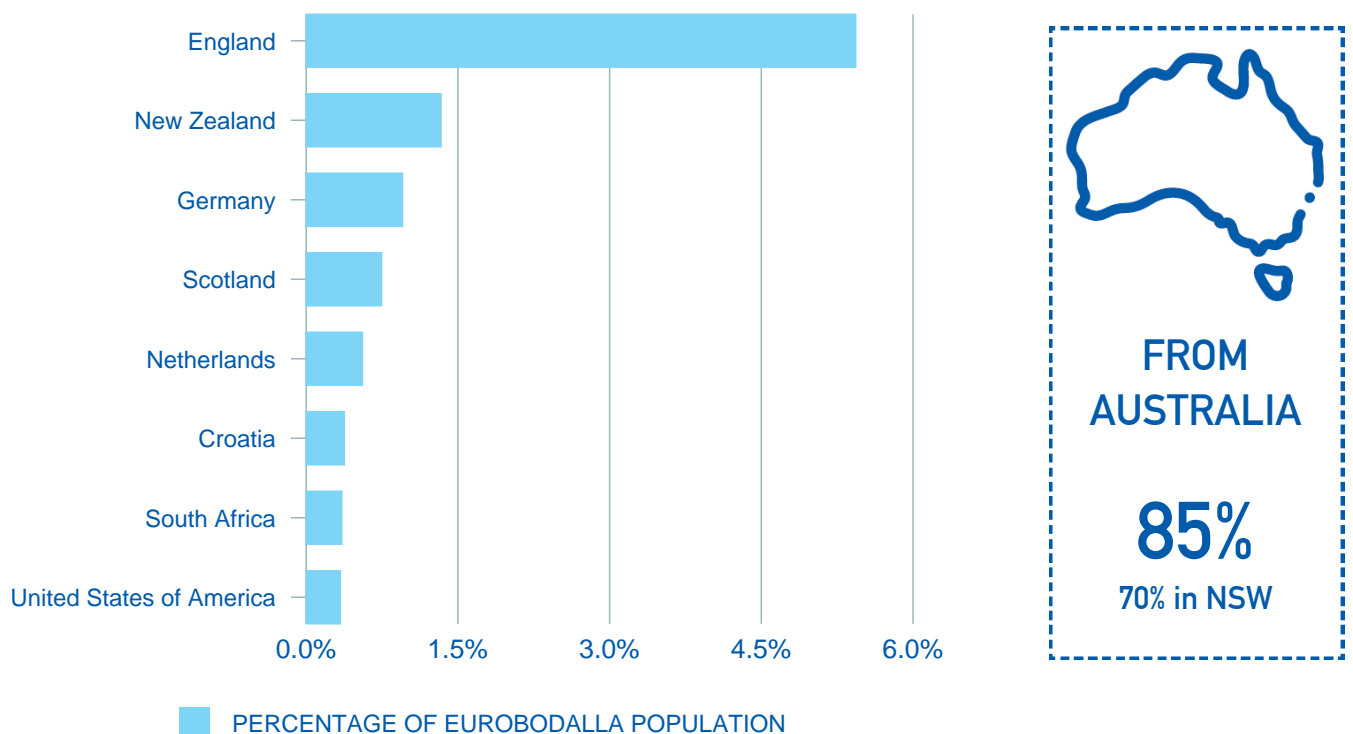
HIGHEST YEAR OF SCHOOLING



DEPENDENCY RATIOS



CULTURAL BACKGROUND



TOURISM SUMMARY

YEAR ENDING
2019-20



TOTAL VISITORS
1,273
(000's)



INTERSTATE
20.5%



INTERNATIONAL
1.8%

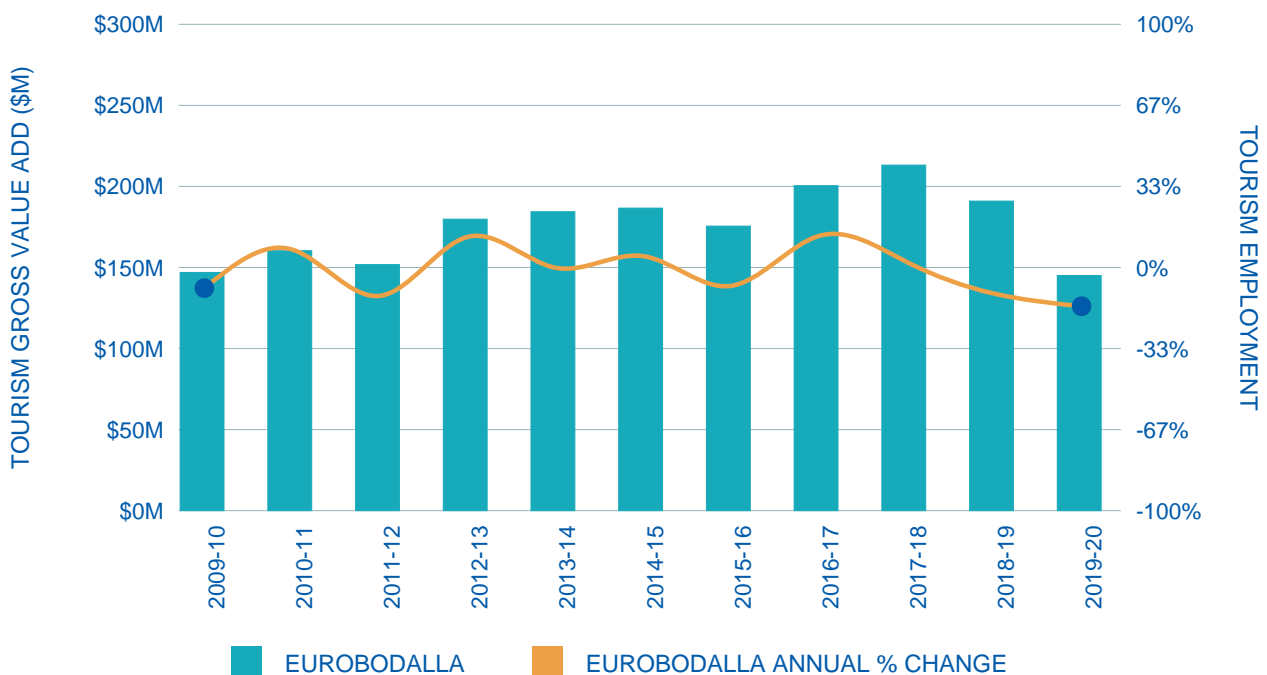


INTRASTATE
28.9%

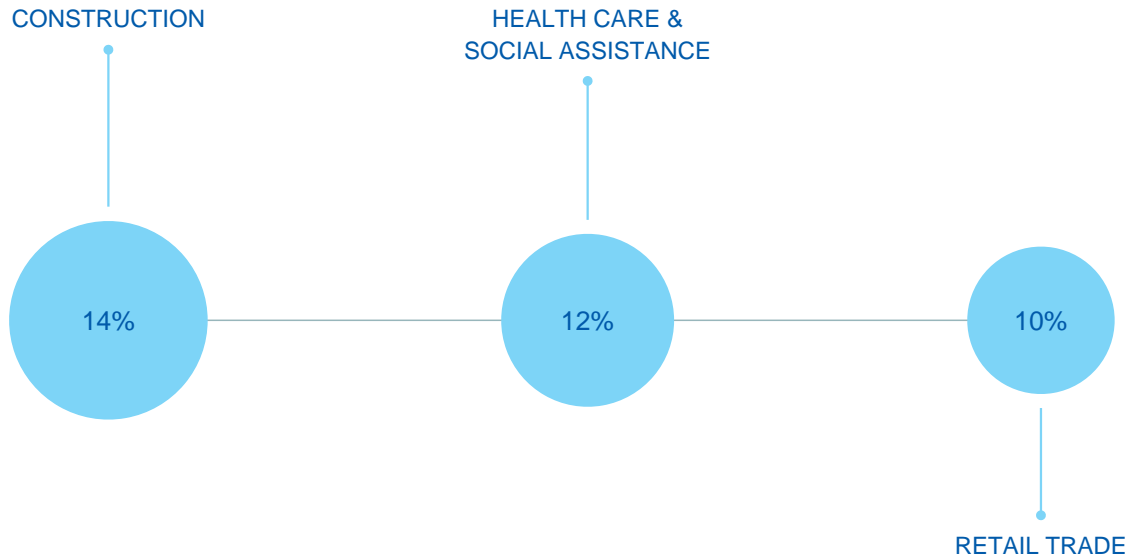


DAYTRIPS
48.8%

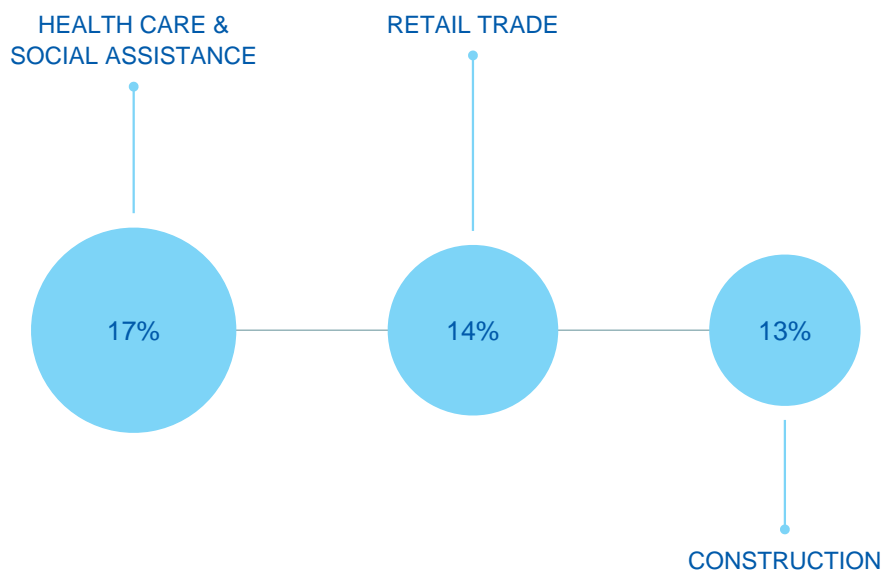
VALUE OF TOURISM



INDUSTRY VALUE ADD BY TOP 3 SECTORS



EMPLOYMENT BY INDUSTRY



NUMBER OF LOCAL JOBS
16,036



Contact Details:
Regional Development Australia Southern
NSW and ACT
T: 02 4822 6397
E: admin@rdasna.org.au
W: rdasna.org.au
Image Credit: Destination NSW

Powered by



DataAU

Disclaimer: Whilst all care and diligence have been exercised in the preparation of this data, AEC Group Pty Ltd (or its associated parties) do not warrant the accuracy of the information contained within and accept no liability for any loss of damage that may be suffered as a result of reliance on this information, whether or not there has been any error, omission or negligence in the development and presentation of information contained in DataAU by the employees, associated parties or information providers of AEC Group Pty Ltd. It is the nature of this data that it may quickly become out of date, and users must make their own assessment of the relevance and accuracy of the data for their intended purpose. No representation is provided regarding the timeliness or accuracy of updated materials.